

PARMI NOS FOURNISSEURS RSE EXEMPLAIRES
AMONG OUR EXEMPLARY CSR SUPPLIERS



December 2022

TABLE DES MATIÈRES

TABLE OF CONTENTS

AAK	3
Ajinomoto	4
Tereos	5
Exsymol	6
Algaia	7
OAT	8



Better Sourcing – shea update

October 2021

HOME / NEWS & MEDIA / NEWS / SHEA UPDATE OCTOBER 2021

October 26, 2021

AAK progressing on its Better Sourcing commitments within shea

Representing our work between January and June 2021, we are proud to share our continued sustainability progress within the shea supply chain. More than 345,000 women are now enrolled in our Kolo Nafaso program in West Africa. In addition, we have planted another 42,000 trees in the region, closing in on our ambition of 150,000 planted trees by the end of the 2024/2025 season.

AAK is one of the largest players in the shea industry and we are proud to set ambitions and drive progress that create positive impact for hundreds of thousands of smallholder women. Our approach to responsible sourcing of shea is a combination of proactive risk mitigation and our ability to influence the way of working to positively impact the livelihoods of the women and their families.

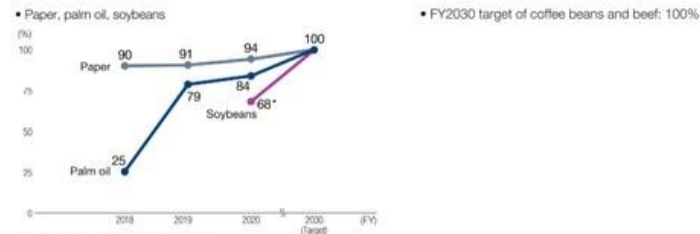
Working with a large supply base, we have chosen to address responsible sourcing in two different ways – via our [Kolo Nafaso women's groups supply chain](#), and via our [traditional supply chain](#).

Sustainable materials sourcing

Approach

The Ajinomoto Group uses the bounty of nature to offer products and services to our customers. This bounty includes products from agricultural, livestock, fisheries, and other sources located around the world. We recognize that our business activities affect the global environment and vice-versa. Sustainable procurement of agricultural, livestock, and fisheries resources, therefore, is an extremely important issue for our businesses. We must also consider other social issues in our supply chain, including the environment, human rights, and occupational safety. We are committed to working closely with our suppliers in initiatives throughout our entire supply chain.

Sustainable procurement ratio



Activity Report

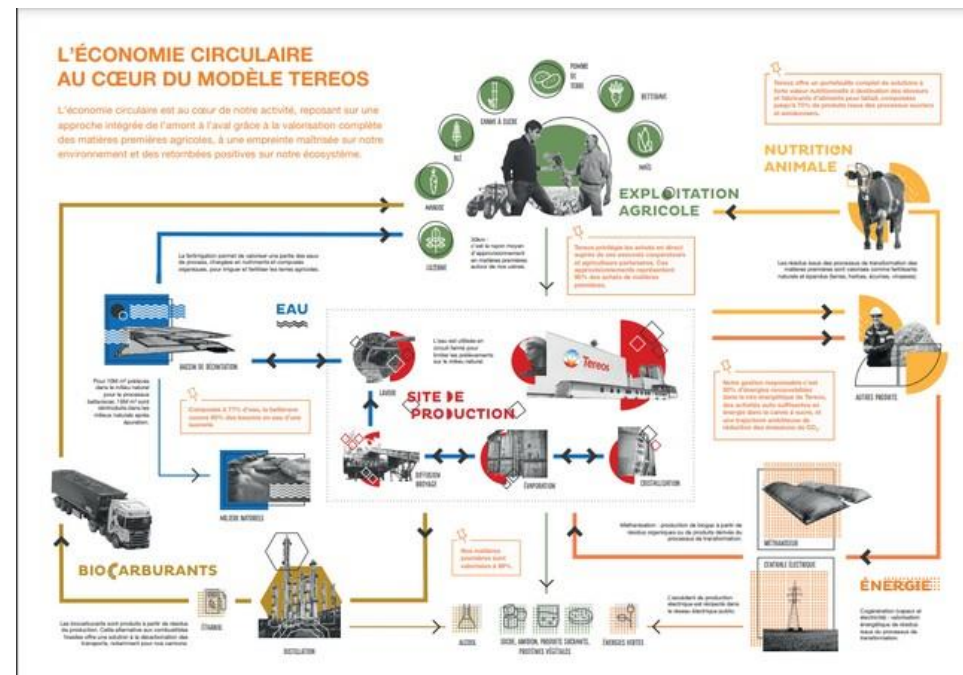
- [Environmental management](#)
- [Initiatives related to key raw materials](#)
- [Supply chain management](#)
- [Animal welfare](#)
- [Contribution to sustainable agriculture](#)

Related Contents

- [CDP Forests](#)
- [Group Shared Policy on Environment](#)
- [Group Shared Policy on Procurement](#)
- [Group Shared Policy for Suppliers](#)
- [Group Shared Policy on Human Rights](#)
- [Group Shared Policy on Animal Welfare](#)

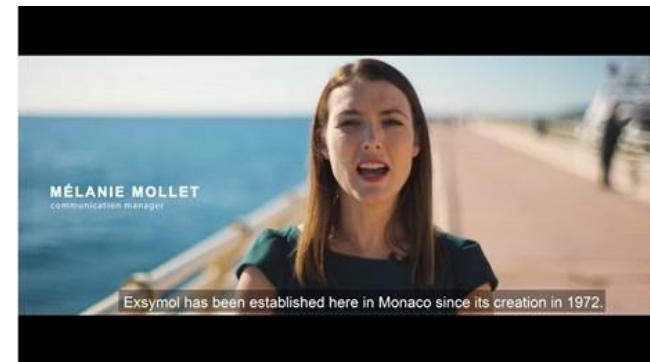
L'économie circulaire au coeur du modèle industriel

Parce que nos matières premières sont rares et précieuses nous veillons jour après jour à la chaîne de fabrication de nos produits. Chez Tereos, nous sommes attentifs à la durabilité des pratiques agricoles et à la valorisation complète de nos matières premières avec une conviction : rien ne se perd, tout se transforme... Grâce à l'économie circulaire, ce qui était hier un résidu est aujourd'hui une ressource pour l'alimentation animale, des ressources énergétiques ou encore des engrais.



La Politique Responsabilité Sociétale et Environnementale de l'Entreprise

Depuis de nombreuses années, nos équipes de chercheurs, opérateurs, managers et administratifs, ont à cœur de créer et d'exploiter des actifs cosmétiques, pharmaceutiques et nutraceutiques répondant au mieux aux besoins de nos clients.
La maîtrise de l'environnement et de la sécurité est le pilier de notre développement responsable.
Ces démarches, rappelons-le, s'inscrivent dans une politique de mobilisation managériale au sein des différents services et dans un contexte où l'indépendance et l'authenticité de notre société sont des gages de pérennité pour nos clients.



Reconnaissance de notre effort continu :



NOUS PRENONS SOIN DE LA PLANÈTE

Les algues sont l'une des seules matières premières ne nécessitant pas d'eau d'irrigation, de pesticides, d'engrais et de terres arables pour pousser.



DÉCOUVREZ NOTRE VIDÉO



Why Oat Cosmetics?



Trusted Source

We manage, along with our partners, a defined and transparent supply chain, starting with optimized varieties of oats; grown under controlled conditions on selected farms and processed through our patented technology.



Sustainable Supply

We are a sustainable company. Our ingredients are produced to the highest standards using modern, sustainable farming practices ensuring full traceability from field to face.



Enhance Formulations

We are focused on bringing you new and exciting ECOCERT natural and organic oat ingredients that are easily incorporated into, and will enhance, your cosmetic formulations.



Global Coverage

We market and sell our ingredients through our global distributor network and take pride that both our ingredients and service are of the highest quality, no matter which country we are serving.



Merci

